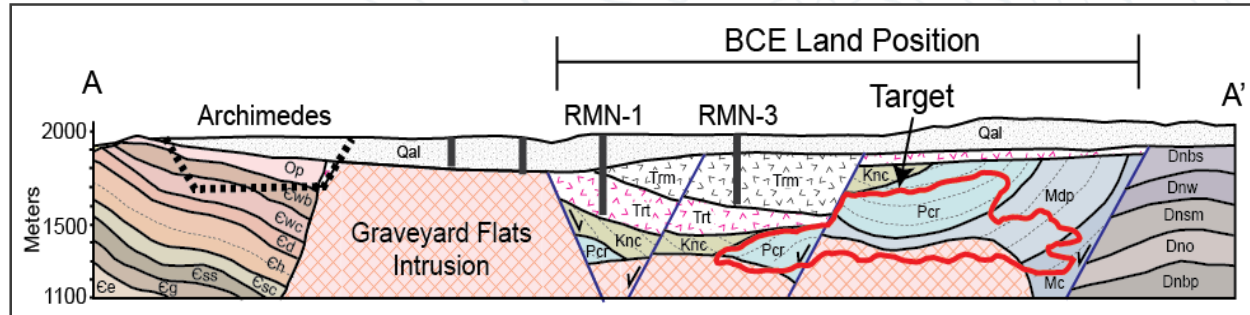


Richmond Mountain Carlin Au Project



- Nevada's Eureka District, on the Battle Mountain- Eureka Trend.
- Two styles of mineralization adjacent to the Cretaceous Graveyard Flats Intrusion.
- Host rocks and alteration similar to Barrick's Archimedes Mine, 2 Km W.
- Five proposed drill sites.

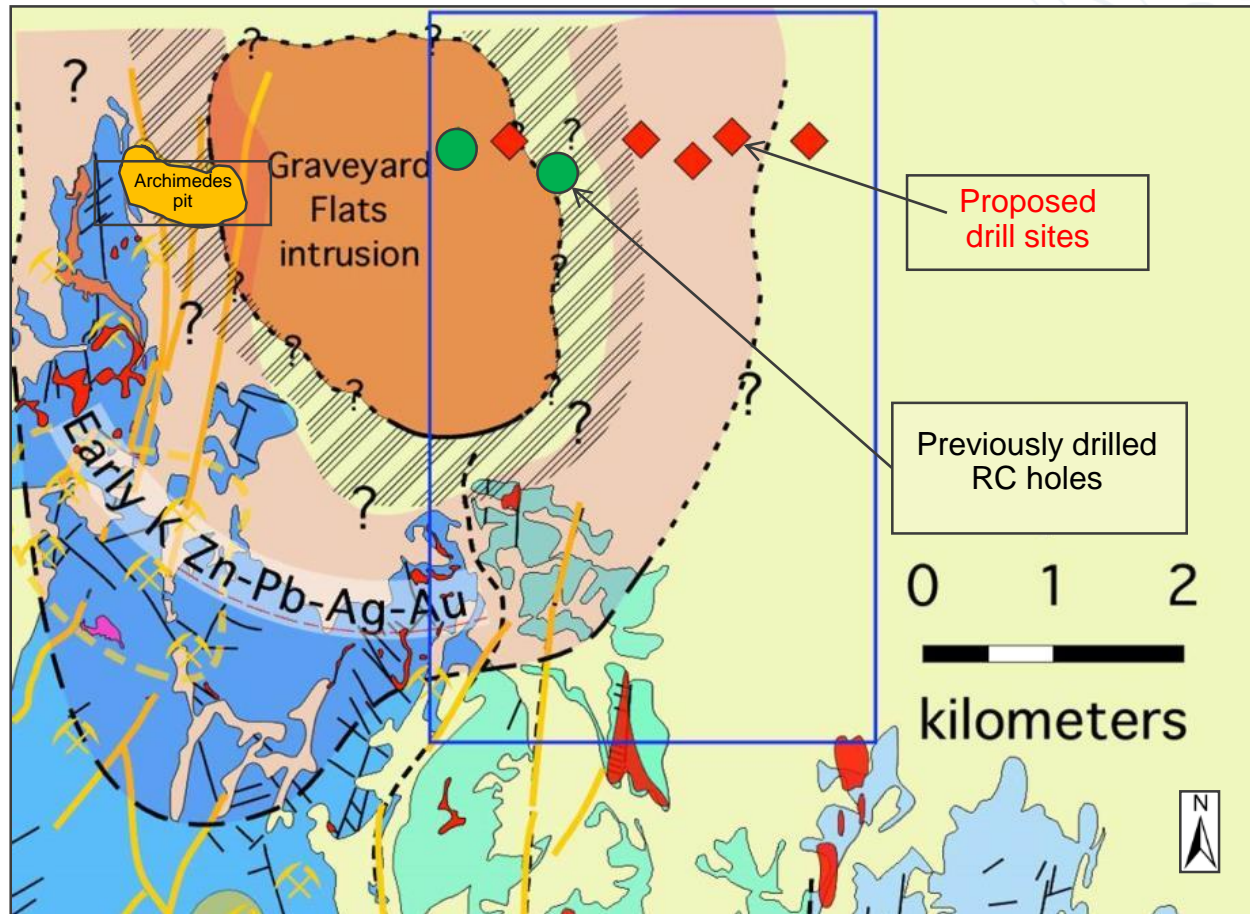


TARGETS

- Disseminated Carlin Au mineralization associated with covered NNE trending normal faults. Potential mirror image of Archimedes Mine.
- Pb-Zn-Ag-Au skarn and replacement mineralization surrounding the Graveyard Flats Intrusion.

DETAILS

- ~955 Hectares. 117 unpatented federal lode claims.
- BLM Land.
- Control: 100% EMX/BCE.
- Location: ~1 Km East of Eureka, Nevada.
- Excellent access via maintained gravel roads.
- Opportunity for partner to control 100%.



Michael P Sheehan P.Geo., a Qualified Person as defined by National Instrument 43-101 and an employee of EMX Royalty, has reviewed and verified the technical information contained in this presentation.

Richmond Mountain Carlin Au Project

GEOLOGY

- Host Rocks: Paleozoic limestones and clastic sedimentary rocks. All are hosts of mineralization regionally.
- Structure: Folded and faulted Paleozoic sedimentary rocks, projecting under cover beneath property position.
- Alteration: North-south oriented zones of jasperoid with anomalous pathfinder elements.

Mineralization:

- Carlin-style Au mineralization overprinted on Ag-Pb-Zn skarn/replacement deposits (analogous to Barrick's Archimedes Mine).
- Structurally-controlled Carlin-type mineralization along normal faults.
- Disseminated Carlin-type Au mineralization.
- Analogous Eureka District Producing Mines: Rustler, Windfall, Archimedes.

Note: The nearby mines and deposits in the region provide geologic context for EMX's Project, but this is not necessarily indicative that the Project hosts similar mineralization.

DATA

- Geologic Mapping.
- Rock chip geochemistry (221 samples).
- Soil sampling (897 samples).
- CSAMT geophysical survey (10 line km).
- 2 RC drill holes (2,740 ft / 835m).

PARTNER WITH EMX

EMX Royalty is a well-capitalized prospect generator with a fifteen-year track record in greenfields exploration, and assets in a dozen countries. EMX acquires early-stage properties worldwide, and seeks partners with insight and funding to advance them to discovery. Partners benefit from a flow of compelling projects managed by seasoned local geologists.

