

Bindal Orogenic Au, Central Norway



HIGHLIGHTS

- Visible gold in shears, breccias and veins
- Outcropping zones of mineralization >100m strike length
- Over 9 of 16 of EMX samples assay > 1 ppm
- Historic mines onsite, with little modern exploration

DETAILS

- Large 256 km² property position.
- 25 km from Terråk, Norway.
- Regional airports within 50 km.
- Hydroelectric power plant onsite.
- No underlying interests.
- Stable, predictable regulatory framework.

DATA

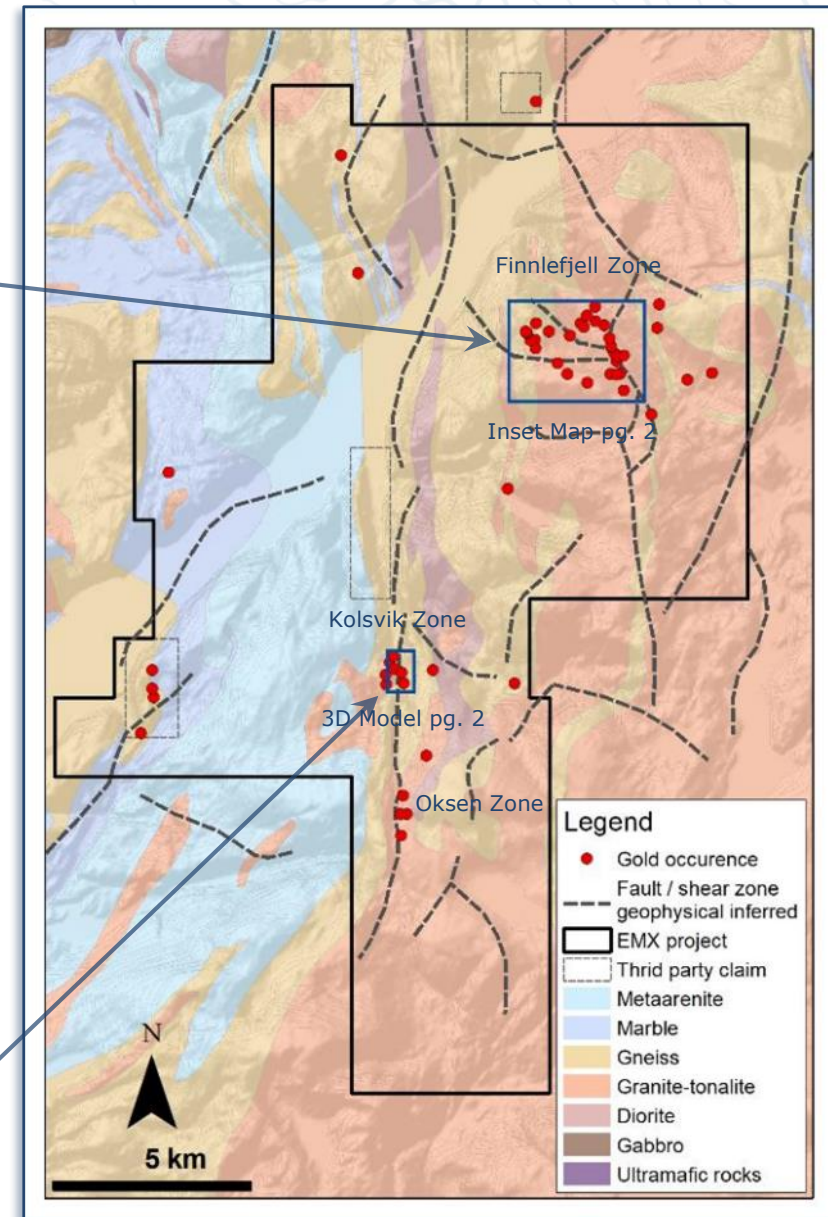
- 1980-86 Drilling: 3430m in 47 holes, detailed in 1993 NGU Report, 324p.
- NGU sampling including 83 rock chip samples with assays.
- EMX geochemical sampling and verification.
- NGU regional geologic mapping (250K).
- NGU regional geophysics (2km line spacing).
- Over 100 historic reports detailing previous work from 1900.

EMX's property reviews have confirmed the geologic setting and occurrence of mineralization on the Project, and considers the historic exploration data to be relevant as reported in public disclosures and government reports.



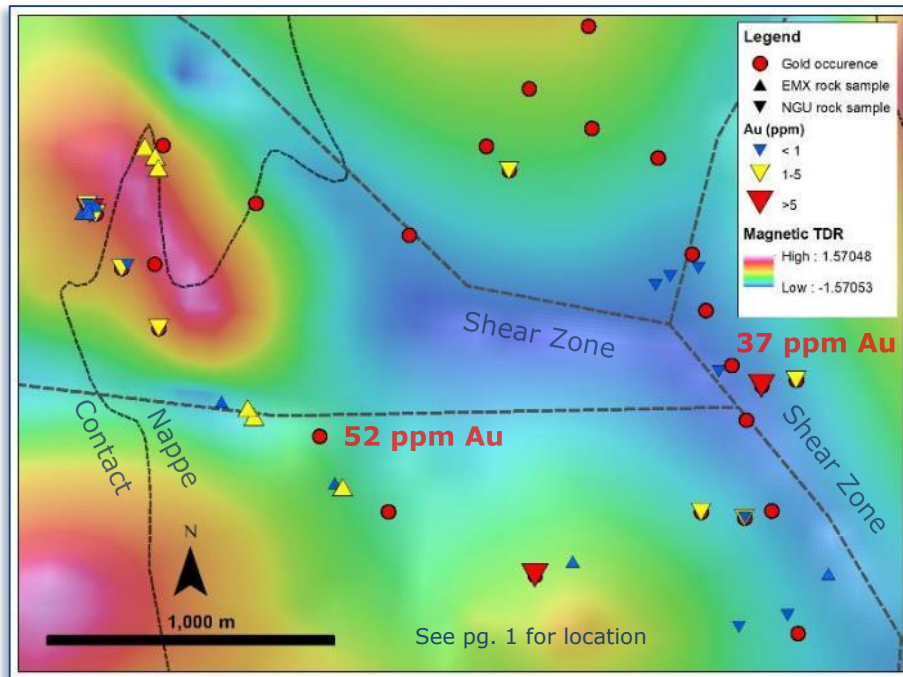
GEOLOGY

- Known mineralization at contacts of Silurian Oksdal granite, of the Helgeland Nappe Complex in the north-central Norwegian Caledonides
- Fault related mineralization in shears, veins and breccias, hosted in schists, gneisses and granites
- Gold associated with arsenopyrite occurs as visible grains in sheared and fractured quartz veins

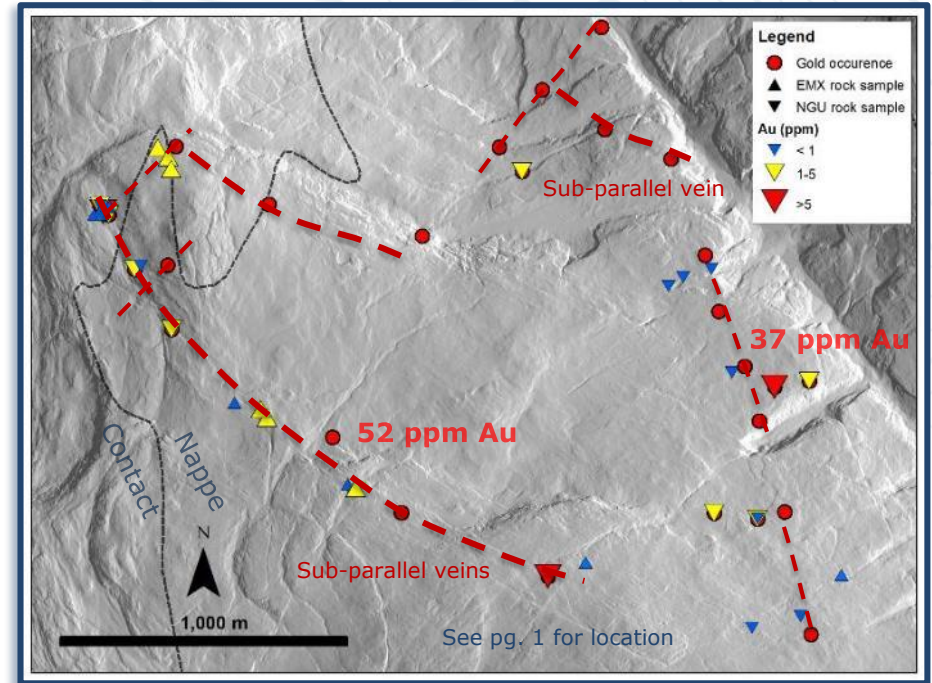


Bindal Orogenic Au, Central Norway

Interpretation of Finnlefjell Zone from MTD



Interpretation of Finnlefjell Zone from DTM



3D Model showing drill data from Kolsvik Zone

TARGETS

- Mineralization associated with shears, faults, and contacts
- Mineralization is open to the north of Kolsvik Vein
- Multiple well-defined Au-bearing vein sets
- Veins up to 1 m wide, outcropping over 1-2 km, untested by drilling

PARTNER WITH EMX

EMX Royalty is a prospect and royalty generator with a fifteen-year track record in greenfields exploration, and assets on five continents. EMX acquires highly prospective properties worldwide, and seeks partners with insight and funding to advance them to discovery. Partners benefit from a flow of compelling projects managed by seasoned local geologists.

Michael Sheehan, CPG., a Qualified Person as defined by National Instrument 43-101 and employee of the Company, has reviewed, verified and approved disclosure of the technical information contained in this presentation.

